

AUTOMATIC FAUCET

(INSTALLATION INSTRUCTIONS)

1.)FUNCTION AND FEATURE

Distance Adjusted Automatically: Plug in, and after forty seconds, lights blink that showing start to work . The set will directly going to the work state if it not induce the obstruction in twelve seconds. If exit the obstruction, the light will always brighten up and the set can automatically adjust the distance as per the obstruction position in 12 seconds. Adjust over, the light will only blink 2 seconds for notice.

Work Procces: The water will come out automatically when hands in sense range and hands away, the set will stop to make the water out. Pls notice to make error operation because of obstruction in sense range. The set will automatically stop the water when continuously exceed 1 minute.

Sense Distance Adjusted: The default of sense distance is 30cm.It can be discretionarily adjusted from 20cm to 40cm. (the sense distance here is based on the paper of 25cm*25cm as baffle-board)

Filter device :it can clean the filter anytime to prevent jamming

Ups power (If choose the AC /DC as the power provide): If the unit using AC power, DC mode is standby .when the AC is turn off, The power provide mode will change to DC automatically.

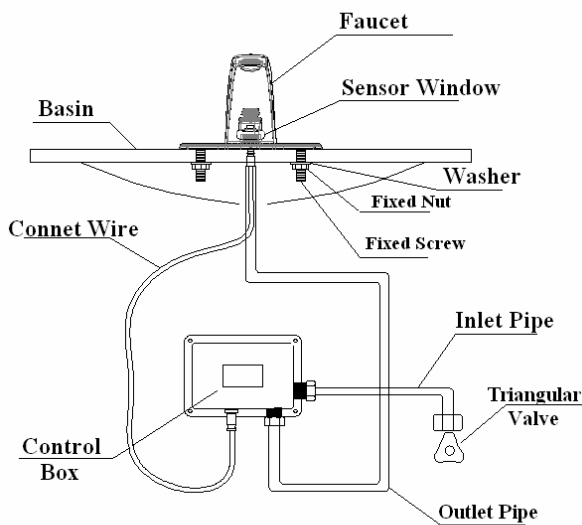
Low Voltage Alarm: When the battery voltage is too low(lower than 4.6v), battery indicating light will flashing one time every 3 sec. If not to replace batteries, the sensor will stop work.

Sanitary : The turn on-off actions are completed automatically by the unit, no need to touch faucet, It can avoid the crossed infection of bacteria effectively.

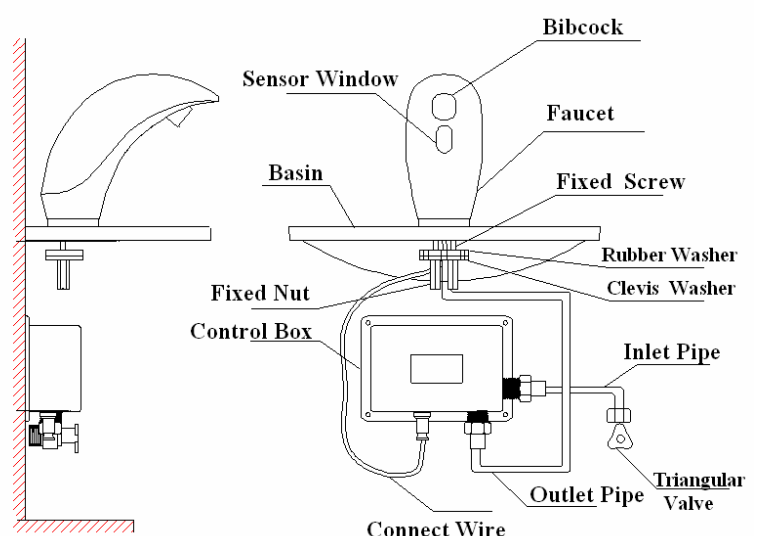
Electricity Saving(DC products): if use 4"AA"size alkaline batteries, using 3000 times/1 month, it can be used at least 1 year.

2.): MODEL AND SPECIFICATION

Model	Power	Material of shell	Sense distance	Water pressure	Size of Pipe	Install
RX-8601	DC6V AC220V DC6V/AC220V	Brass	20-60cm	0.05~0.7Mpa	G 1/2" (DN15)	Single hole/
RX-8602						Three hole
RX-8603						Single
RX-8604	3 mode for chooce	Alloy of Znic				



RX-8601,RX-8602,RX-8603(Three Hole)



RX-8604(Single Hole)

3.): Installaiton Steps

● Single installation(for single basin):

1. Before Installation, please check the pipe and make sure the pipe is clean(no rubbish)
2. Take out the fixed screw, fixed nut, rubber washer, clevis washer.
3. Screw the fixed screw on the bottom of the faucet (about 10mm), insert in the single hole of basin, and put the rubber washer, clevis washer, fixed by nut.
4. Install the control box as per the above drawing. Outlet pipe(anguine hose) contact with the outlet end , screw and fix.
5. Inlet pipe(anguine hose) contact with the inlet end, another end contact with the triangular valve and fix.
6. Another end of outlet pipe(anguine hose)contact with outlet hole on bottom of the faucet(or the outlet bibcock in faucet), screw and fix.
7. Power: DC: put 4pcs 5# size alkaline batteries in batteries box, screw the box.
 AC: contact AC with the electrical source set, turn-on the AC.
 AC/DC: put the batteries, inspect the DC voltage and contact with the AC power.

● Three hole installation(for three hole basin)

1. Before Installation, please check the pipe and make sure the pipe is clean(no rubbish)
2. Take out the fixed nut, rubber washer, clevis washer.
3. Insert the fixed screw of faucet in the double hole of basin, and put the washer, fixed by nut.
4. Install the control box as per the above drawing. Outlet pipe(anguine hose)contact with the outlet end, screw and fix.
5. Inlet pipe(anguine hose) contact with the inlet end, another end contact with the triangular valve and fix.
6. Another end of outlet pipe(anguine hose) contact with outlet hole on bottom of the faucet, screw and fix.
7. Power: DC: put 4pcs 5# size alkaline batteries in batteries box, screw the box.
 AC: contact AC with the electrical source set, turn-on the AC.
 AC/DC: put the batteries, inspect the DC voltage and contact with the AC power.

4.):Trouble Shooting

Symptoms	Probable Causes	Corrective Action
	Power trouble	Check the power
	The sensing window is Too dirty	Clean the window
	The filter is too dirty And obstructed	Clean the filter
	Water pressure is not Under the adaptive range	Consult the model and Specification
	The sensing distance is on the process of Adjusting	Wait for 1 minutes
Keep Flushing	Out of electricity(DC)	Change new battreries
	Power trouble(AC)	Check the power
	Water pressure is not under the adaptive range	Consult the model and Specification
Little water still left After water supply be cut off	Water pressure is not under the adaptive range	Consult the model and Specification
	The filter is too dirty	Clean the filter
Flushing volume is Too small	Water pressure if too Low	Consult the model and Specification
	The filter is too dirty	Clean the filter

5.):Maintenance

● Clean the filter& Clean windows

If the flushing volume reduces sharply after installing or has used for a long time with no cause from water pressure.the fiLter of inlet end(in control box)may need washing.
 Keep the sensing window clean,wipe with soft cloth mild cleaner.